

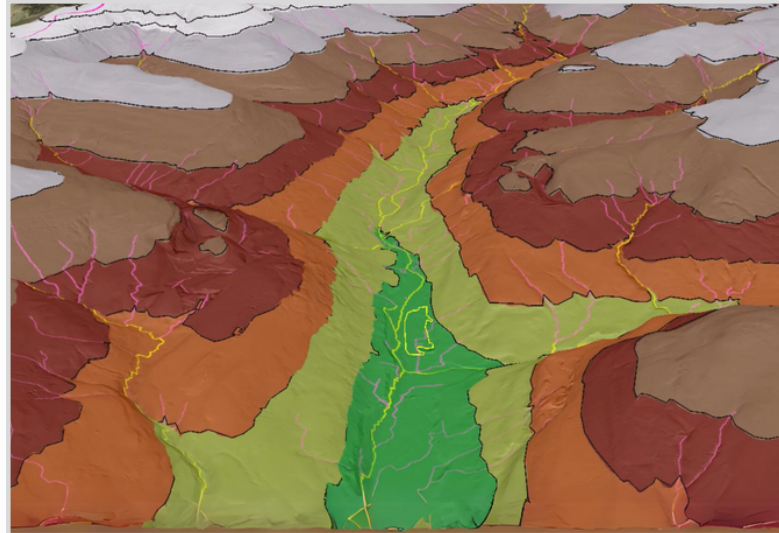
GEOSCIENTIFIC DESK STUDY REPORTING

Magnum GSI is a trusted provider of geoscientific desk study report services, offering comprehensive and reliable assessments to support a range of projects. With our expertise in geology, geotechnics, hydrology and data analysis, we deliver accurate and insightful reports that assist clients in making informed decisions regarding site suitability, project feasibility, and risk mitigation.

Our Services

Our range of services includes, but is not limited to:

- 1** **Data Collection and Analysis:** Our geoscientific desk studies involve thorough data collection from various sources, including geological maps, historical records, remote sensing data, and relevant literature. We utilise advanced tools and methodologies to analyse the data and extract key information pertinent to the project.
- 2** **Geological and Geotechnical Summary:** Our desk study reports include detailed summaries of the geological and geotechnical characteristics of the study area. We identify key geological formations, soil types, rock properties, and other significant factors that may impact construction, development, or engineering projects.
- 3** **Site History and Hazards Assessment:** We investigate the historical usage and development of the site, including past geological events and potential hazards that could affect the project. Our reports highlight any known risks, such as landslides, sinkholes, or flooding, providing an understanding of the site's vulnerability and potential impacts.
- 4** **Groundwater and Hydrogeological Analysis:** We assess the hydrogeological aspects of the study area, including groundwater presence, flow patterns, and potential interactions with structures or infrastructure. Our reports help clients understand the groundwater dynamics, which is crucial for site planning and design considerations.
- 5** **Recommendations and Mitigation Strategies:** Based on our geoscientific desk study findings, we provide practical recommendations and mitigation strategies to manage potential risks and optimize project outcomes. These recommendations may include foundation design considerations, slope stabilization measures, or groundwater management strategies.
- 6** **Reporting and Communication:** We deliver comprehensive desk study reports clearly and concisely, presenting our findings and recommendations in an easily understandable format.



Our Approach

At Magnum GSI, our methodology is based on a foundation of experience, innovation, and a relentless pursuit of excellence. We believe that a harmonised blend of traditional geoscientific knowledge and modern technological advancements is key to addressing the dynamic challenges our clients face. Our general approach to geoscientific solution deliverables:

- **Data-centric decision-making:** we harness the power of data to inform and drive decisions, blending geospatial field data deployment with advanced analytics.
- **Innovation at the Core:** We embrace cutting-edge technologies, including machine learning, AI, and cloud computing, to infuse innovation and flexibility into geoscientific data analysis.
- **Collaborative Engagement:** Our commitment to deep client engagement ensures a harmonised approach, delivering results that consistently exceed expectations.
- **Holistic Expertise:** Our team boasts a harmonious blend of geoscience knowledge and advanced IT proficiencies.

